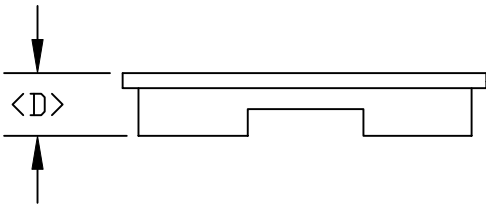
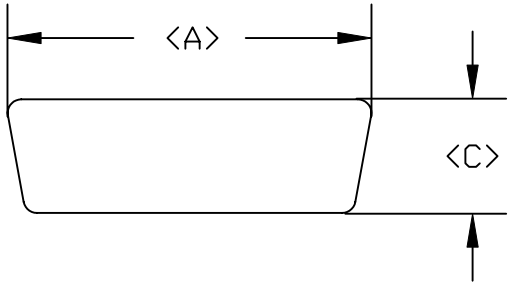


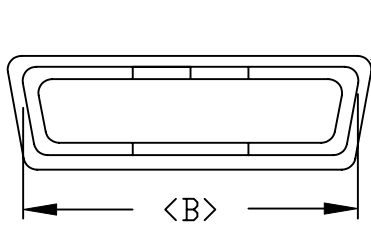
DESCRIPTION: DUST COVER FEMALE

DIMENSIONS

	A	B	C	D
9	.887	.783	.520	.262
	22.53	19.88	13.21	6.65
15	1.222	1.113	.520	.262
	31.03	28.27	13.21	6.65
25	1.752	1.645	.520	.262
	44.51	41.79	13.21	6.65
37	2.420	2.310	.520	.283
	61.47	58.67	13.21	7.19
50	2.154	2.154	.543	.315
	54.70	54.7	13.80	8.00




50 POSITION HAS NO LIP



50 POSITION HAS NO LIP

	PART NUMBER
09	160-000-209-000
15	160-000-215-000
25	160-000-225-000
37	160-000-237-000
50	160-000-250-000

MATERIAL:  
PLASTIC: PE

	THESE DRAWINGS AND SPECIFICATIONS ARE THE PROPERTY OF NorComp AND SHALL NOT BE REPRODUCED, COPIED OR USED AS THE BASIS FOR THE MANUFACTURE OF SALE OF APPARATUS WITHOUT WRITTEN PERMISSION.		DRAWN: <b>PAM JENKINS</b>	DATE: <b>8-5-98</b>	
	<h1>NorComp</h1>			CHECKED:	DATE:
SCALE:				SHEET <b>1</b> OF <b>1</b>	REV <b>3</b>
DWG NO. <b>160-000-2XX-000</b>					